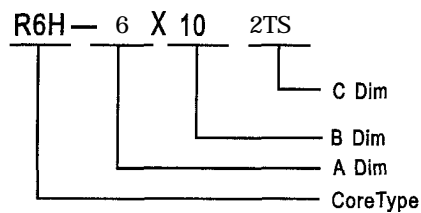


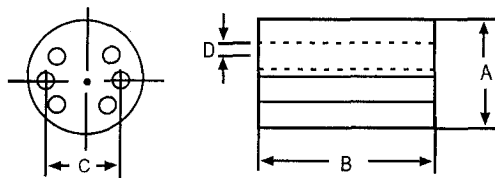
MULTI - APERYURE WOUND BEADS

R6H CORES

1. Ordering Code :



2. Core Shape :



3. Features :

The chokes consist of rod-type bodies with six or eight axial holes through which wire is threaded to form a 1.5 , 1.5 x **2, 2.5 , 3** turns coil.

4. Application :

R6H TYPE core are produced for Wide Band Chock,PC board , radio , Tvs and communication equipment,etc.

5. Core Dim :
(m/m)

A	6.0±0.2
B	10.0±0.4
C	3.4±0.15
D	0.85±0.1

6. Impedance :

Fig	TURNS	A3			B-15		
				100MHz	10MHz	50MHz	100MHz
1	1 1/2	130	320	450	180	350	380
2	2x1 1/2	130	320	450	180	I 350	380
3	2	200	520	580	260	500	480
4	2 1/2	250	750	700	360	700	580
5	3	320	900	700	450	800	580